



Insist on the Original!

**Tire Repair Materials, Vulcanizing Equipment and
Section Repair Molds**



**VULCAN
VULCAP**

www.vulcanvulcap.com



Built in Canada for hard work since 1956

“75 years of high-quality equipment & service to the tire repair industry”

**Specialized in Tire Repair Materials,
Vulcanizing Equipment and
Section Repair Molds**

FOR TRUCK TO OTR

www.vulcanvulcap.com
vulcanize@vulcanvulcap.com
+1 416-2660371

About...

At Vulcan-Vulcap Industries Inc. we design and manufacture tire repair products and solutions while specializing on vulcanizer equipment of the highest quality .

Our goal is to help your tire repair business operate efficiently and profitably by reducing your down time as well as your new tire expenditure , the more tires you repair the less you will spend .

Canadian owned since 1956, Vulcan Equipment Company was founded by Erhard J. Alm who changed the tire repair industry with a revolutionary concept in tire vulcanizing. He invented the first portable, electric mold for passenger and commercial tires.

The Vulcan MPB Passenger Section Repair Mold cut curing time from 90 to 30 minutes, requires minimum electricity and was mass produced at a price that enthused tire repair and retread shops around the world.

Today with over 10,000 machines sold, Vulcan-Vulcap Industries Inc., still supplies parts for these molds as well as manufacturing a new generation of Section Repair Molds Systems and Vulcaflex® Portable Repair Systems for truck and OTR tires. For tires ranging from truck tires to 63" (Giant) OTR tires.

Vulcan-Vulcap Industries also manufactures a wide range of tire repair and retread accessories for truck and OTR Equipment.

Our commitment to provide "leading edge equipment" is paired with advanced R&D and followed with rigorous testing and evaluation.



www.vulcanvulcap.com
vulcanize@vulcanvulcap.com
+1 416-2660371

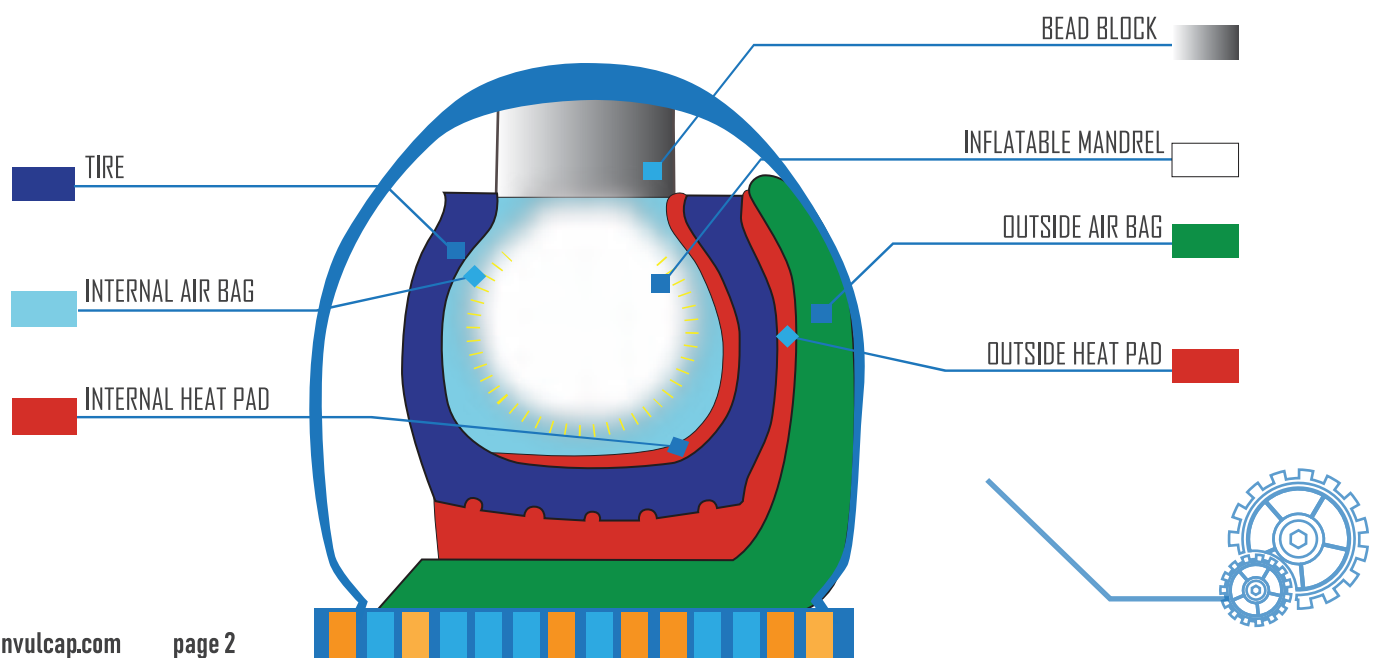
Section REPAIR

VULCAN-VULCAP® Section Repair Mold Systems (SRMS) are engineered to accurately repair from the smallest passenger tire or truck, tractor or skidder tire up to a 57" OTR (Earthmover Tires).

We offer you measurable **precision you can count on**, with accurate time control, adjustable temperature and pressure ensuring optimal vulcanizing results.

Flowing rubber during the curing process will densely seal any repaired injury, providing a permanent and leak-free repair. Pressure and heat offer maximum adhesion, curing simultaneously plug and patch.

■ Permanent outside air bag & heat pad	■ Available in electric or steam configuration
■ Expandable cavity makes it easy to load	■ 220V single phase, 25, 20, 15 amps.
■ Built-in automatic air differential control	■ Warranty of 400 curing hours on parts and heat pads
■ Air differential control (45 P.S.I)	■ Made in Canada



MoldSystems

V14 SRMS

V14 Section Repair Mold System

For Radial and Bias Truck Tires

Tire size 8.25R15 to 12.00x24

Repairs up-to 4" injury for Bias tire without distortion

Repairs up-to 18 cables on Radial tire without distortion

Up-to 14" x 14" patch (35.5 cm x 35.5 cm)



MV20 Section Repair Mold System

For Radial and Bias Tractor, Skidder and Road Grader Tires

Tire size 14.00R24/25 to 18.00 x 24/25

MV20 SRMS

Repairs up-to 10" injury for Bias

Repairs up-to 20 cables on Radial tire

Up-to 20" x 20" patch (50.8 cm x 50.8 cm)

MoldSystems

MV30 SRMS



MV30 Section Repair Mold System for Radial & Bias Tractor, Skidder and Road Grader Tires

Tire size 20.5R25 to 24.00 x 35

Optional top clamp extension allows handling of larger tires (29.5R 25/29)

Repairs up-to 12" injury for Bias tire

Repairs up-to 20 cables on Radial tire

Up-to 24" x 24" patch (61 cm x 61 cm)

EXPANDABLE STEEL CAVITY

MV40 SRMS

MV40 Section Repair Mold System
For OTR tire size 27.00R49 to 37.5 x51
Repairs up-to 12" injury on Bias tires
Up-to 18 cables on Radial tire
Up to 24" x 24" patch (61 cm x 61cm)



Section REPAIR

MV50 SRMS

MV50 Section Repair Mold System

For OTR Tires size 36.00R51 to 54.5/80R57

Repairs up-to 12" injury for Bias tire

Repairs up-to 15 cables on Radial tire

Up-to 24" x 24" patch (91 cm x 91 cm)

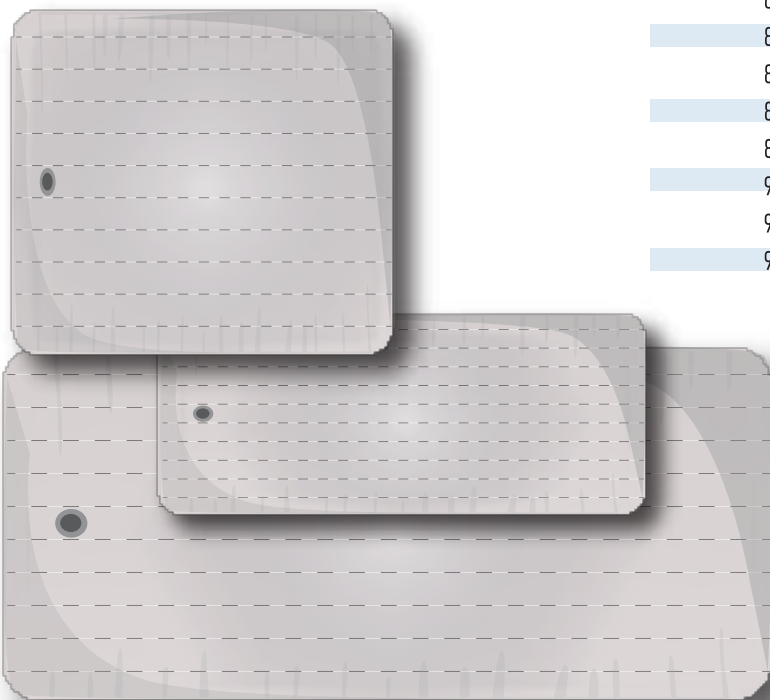


Part per MOLD

MOLD SYSTEM	INSIDE AIR BAG	MANDREL	OUTSIDE	OUTSIDE	SPREADER BAG	INSIDE HEAT PAD	OUTSIDE HEAT PAD	BEAD FILLER	SIDE FILER PAD	SUPPLY AVAILABLE		
			MAIN AIR BAG	SIDE AIR BAG						120V	220V	STEAM
RTV	N/A	12800	12500	N/A	N/A	12700	12600	12100	N/A	X	X	X
V14	N/A	N/A	201800	N/A	814100	204900	200500	201500	810600	X	X	X
MV20	891200 OR 259300	253700 OR 253200	20400	N/A	N/A	856100	251000	830080	830070	N/A	X	X
MV30	210300	216300 OR 215900	300100	N/A	N/A	210192	300500	210200	216260	N/A	X	X
MV40	37600	370400	405100	40500	N/A	376292	405200	373100	373260	N/A	X	X
MV50	37660	370400	501400	501300	N/A	500492	502600	373100	500500	N/A	X	X

all mold **air** BAGS

12120	AIR BAG INFLATABLE MANDREL (LOW PROFILE)	RTV12	253700	AIR BAG INFLATABLE MANDREL	M3 18 lbs
12500	AIR BAG 40" x 12" RTV12	Main Bag	256240	AIR BAG 22" x 43"	SM250 Main Bag
12800	AIR BAG INFLATABLE	MANDREL RTV12	256500	AIR BAG 22" x 19"	SM250 Side Bag
140410	AIR BAG 22" x 45"	MTB	259300	AIR BAG 20" x 50"	Vulcamatic "C"
140920	AIR BAG 22" x 43"	MT	300100	AIR BAG 84.5" x 30"	MV30
180200	AIR BAG 33" X 33"	V18 Inside bag	370400	AIR BAG INFLATABLE MANDREL	M8
182900	AIR BAG 33" x 71"	V18	372100	AIR BAG 37" x 36"	V37.5 Side Bag
200400	AIR BAG 15" x 19"	MTB inside bag	372200	AIR BAG 37" x 72"	V37.5 Main Bag
201700	AIR BAG INFLATABLE MANDREL	M2	376000	AIR BAG 37" x 66"	V33/V37.5/V45/MV40/MV50 Exp
201800	AIR BAG 21" x 40"	V14	376100	AIR BAG 37" x 45"	V33/V37.5/V45/MV40/MV50 Exp
20400	AIR BAG 65" x 20"	MV20 40 lbs	376300	AIR BAG 37" x 56"	V33/V37.5/V45/MV40/MV50 Exp
204000	AIR BAG 17" x 25"		376600	AIR BAG 37" x 80"	V33/V37.5/V45/MV40/MV50 Exp
204700	AIR BAG INFLATABLE MANDREL (LOW PROFILE)	M2 16 lbs	376900	AIR BAG 37" x 90"	V33/V37.5/V45/MV40/MV50 Exp
210300	AIR BAG 33" x 55"	V310/V21/MV30 Expandomatic Bag	377000	AIR BAG 37" x 100"	V33/V37.5/V45/MV40/MV50 Exp
210400	AIR BAG 33" x 45"	V310/V21/MV30 Expandomatic Bag	405000	AIR BAG 44" x 35"	Side AIR BAG
214500	AIR BAG 26" x 33"	V21 Side Bag	405100	AIR BAG 81" x 35"	Main AIR BAG
214600	AIR BAG 33" x 58"	V21/V310 Main Bag	500100	AIR BAG 95" x 37"	V45 Main Bag
215900	AIR BAG INFLATABLE MANDREL	M6	500200	AIR BAG 48" x 37"	V45 Side Bag
216300	AIR BAG INFLATABLE MANDREL	M5	501300	AIR BAG 50" x 40"	MV50 Side Bag
217000	AIR BAG LOW PROFILE KIT	MV 20	501400	AIR BAG 103" x 40"	MV50 Main Bag
221600	AIR BAG 22 1/2" x 64"	V20	69-113	AIR BAG 18-1/2" x 12"	100-A4AST - 18-4
253200	AIR BAG INFLATABLE MANDREL	M4	814000	AIR BAG 11 1/2" x 19 1/2"	SM180 Spreader Bag
			814100	AIR BAG 15" x 19 1/2"	V14/SM180/SM250/V20 Spreader Bag
			816700	AIR BAG 22" x 36 1/2"	SM180 Main Bag
			816800	AIR BAG 22" x 16"	SM180 Side Bag
			891100	AIR BAG 20" x 30"	Vulcamatic "A" Bag
			891200	AIR BAG 20" x 40"	Vulcamatic "B" Bag
			901700	AIR BAG 12 1/2" x 30"	MPB Bag
			919600	AIR BAG INFLATABLE MANDREL	M1
			920000	AIR BAG INFLATABLE MANDREL	M0

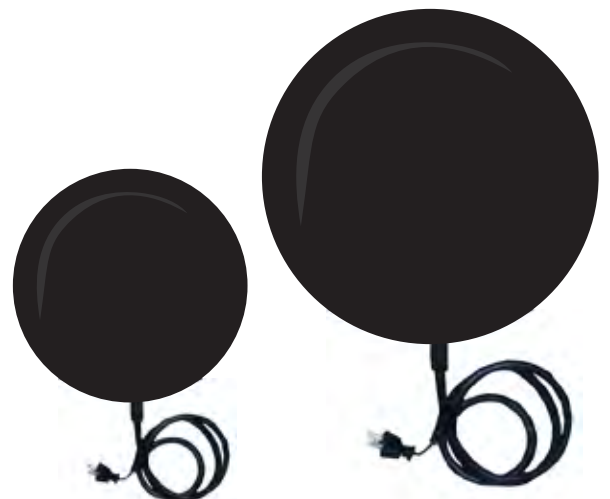


CUSTOM SIZES
AVAILABLE
upon request

heat PADS

903500	HEAT PAD L SHAPE 15" x 12"	(MPB) Outside
12600	HEAT PAD L SHAPE 20" x 13"	RTV12 outside
12600T	HEAT PAD L SHAPE 20" x 13"	RTV12 THERMOCOUPLE outside
200591	HEAT PAD L SHAPE 21" x 20"	V14 - Outside 110V
200592	HEAT PAD L SHAPE 21" x 20"	V14 - Outside Electric 220V
200592T	HEAT PAD L SHAPE 21" x 20"	V14 - Outside Electric 220V with T.C.
200593	HEAT PAD L SHAPE 21" x 20"	V14 - Outside STEAM
856091	HEAT PAD L SHAPE 23" x 21"	(MT/MTB/SM180) Outside 110V
856092	HEAT PAD L SHAPE 23" x 21"	(MT/MTB/SM180) Outside 220V
856092T	HEAT PAD L SHAPE 23" x 21"	(MT/MTB/SM180) Outside 220V with T.C.
856093	HEAT PAD L SHAPE 23" x 21"	(MT/MTB/SM180) Outside STEAM
111300	HEAT PAD L SHAPE 24" x 15"	Commercial outside
221500	HEAT PAD L SHAPE 35" x 21"	(V20) Outside
221593	HEAT PAD L SHAPE 35" x 21"	(V20) Outside STEAM
251000	HEAT PAD L SHAPE 39" x 21"	(SM250/MV20) Outside
251000T	HEAT PAD L SHAPE 39" x 21"	(SM250/MV20) Outside with T.C.
251093	HEAT PAD L SHAPE 39" X 21"	(SM250/MV20) Outside STEAM

69-114	HEAT PAD 8" x 18"	NATIONAL 100 -A4AST- 29-4 , 110V
69-115	HEAT PAD 8" x 18"	NATIONAL 100 -A4AST- 29-4 , 220V
12700	HEAT PAD 18" x 14"	RTV12 inside
12700T	HEAT PAD 18" x 14"	RTV12 inside with T.C.
214800	HEAT PAD V18/21	
210192	HEAT PAD 28" x 28"	V18/V21/V310/V33/V37.5/MV30/MV40) 220V
210192T	HEAT PAD 28" x 28"	(V18/V21/V310/V33/V37.5/MV30/MV40) 220V with T.C.
210293	HEAT PAD 30" x 30"	(V18/V21/V310/V33/V37.5/MV30/MV40) STEAM
376292	HEAT PAD 32" x 32"	(V33/V37.5/MV40/V45/MV50) 220V
376993	HEAT PAD 32" x 32"	(V33/V37.5/MV40/V45/MV50) STEAM
500492	HEAT PAD 38" x 42"	(V45/50) 220V
300592	HEAT PAD 42" X 29"	Inside STEAM
500493	HEAT PAD 42" x 42"	(V45/50) STEAM
310400	HEAT PAD	V310



CUSTOM SIZES
AVAILABLE
upon request



heat PADS



204891	HEAT PAD 20" x 10" finish	SM180/V14 RADIAL ONLY Inside 110V
204892	HEAT PAD 20" x 10" finish	SM180/V14 RADIAL ONLY Inside 220V
300500	HEAT PAD 39" x 22" finish	(MV30)
300592T	HEAT PAD 39" x 22" finish	(MV30) with T.C.
372400	HEAT PAD 60" x 30" finish	(V33/V37.5)
300692	HEAT PAD 39" x 22" Thin	Overlay 220V
400692	HEAT PAD 48" x 26" Thin	Overlay 220V
500692	HEAT PAD 65" x 33" Thin	Overlay 220V
500693	HEAT PAD 65" x 33" Thin	Overlay STEAM
405200	HEAT PAD MV40	
502600	HEAT PAD MV50	
502693	HEAT PAD MV50	
904891	HEAT PAD 9" X 9"	VULCAMATIC "AAA" Inside (MPB) 110V
904892	HEAT PAD 9" X 9"	VULCAMATIC "AAA" Inside (MPB) 220V
903791	HEAT PAD 12" X 12"	VULCAMATIC "AA" 110V
903792	HEAT PAD 12" X 12"	VULCAMATIC "AA" 220V
204992	HEAT PAD 19" x 16"	VULCAMATIC "A" (V14/SM180/MTB) Inside 220V
204992T	HEAT PAD 19" x 16"	VULCAMATIC "A" (V14/SM180/MTB) Inside 220V with T.C.
204991	HEAT PAD 19" x 16"	VULCAMATIC "A" (V14/SM180/MTB) Inside 110V
856100	HEAT PAD 22" X 22"	VULCAMATIC "B" Inside
259700	HEAT PAD 23" X 33"	VULCAMATIC "C" Inside
259793	HEAT PAD 23" X 33"	VULCAMATIC "C" Inside STEAM





INSPECT HEAT PADS

To maximize the shelf life of your Heat Pads and Air Bags we recommend regular visual inspection before each use.

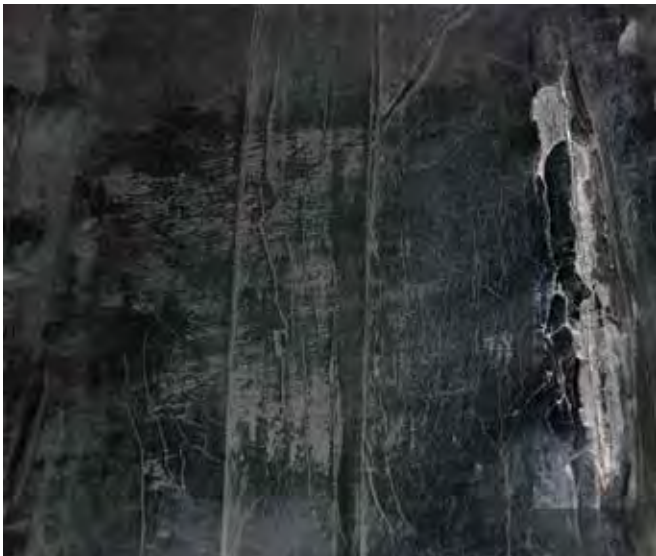
On HEAT PADS look for any sign of mayor deterioration, like long cracks or bent surfaces where the heating element or coils are exposed, if this is the case, we recommend you cease to use the heat pad.



PROTECT HEAT PAD

Often damages to the heating element and plug are caused by pulling the heat pad by the cord, which is why VULCAN VULCAP developed the HEAT PAD COVERS, they come with handles specifically made to pull the heat pad away from the tire and avoid pulling on the cord,

VULCAN VULCAP HEAT PAD COVERS not only protects the heat pad and extends the shelf life by 20% they also provide a smoother more evenly cure texture for better results.



Before reusing the HEAT PAD, we recommend to test and verify the continuity of the heating element and with a multimeter than pre heat to no more than 100F and ensure that the HEAT PAD is heating evenly, Once your visual and heating element testing is done you can then safely proceed to use the HEAT PAD as usual, remember to always heat your heat pad to the curing temperature only once mounted.



Heat Pad Covers

INSPECT AIR BAGS

On AIR BAGS look for any irregularity on the surface of the AIR BAG such as: punctures, loose thread, or broken fabric and/or cords.

Fill with 10 PSI and inspect for any air leakage, pay close attention to any hissing sound as this might be a sign of air leakage.

Check the condition of the coupling and verify the air tightness, coupling base should look in good condition and feel firm, if you feel the coupling base is loose please contact us to re-order.

Always avoid pulling the air bag by the coupling as it may break the base and cause the air bag to malfunction.

If you notice that your equipment, tools, heat bags or air bags are malfunctioning, deteriorating or simply stop working contact us at vulcanize@vulcanvulcap.com



Vulcaflex®

- Inside/outside air bag pressure
- Inside/outside thermocouple plugs
- Inside/outside rugged heat pads
- Audio Alarm
- Built-in thermocouple
- VVCPM Control panel
- *CSA/UL Certified upon request
- Customizable power plug
 - 6 pin, or 2 pin
- Standard 120V/220V



PORTABLE VULCANIZING System

Vulcaflex® Portable Repair System offers you the most advance curing method when repairing Radial, Bias and all OTR tires 13.00 through 63" tire sizes.

The system allows you to manually adjust its air bags and heat pads to the tire contour with maximum flexibility, superior pressure and heat control, customizable power plugs makes this system a must-have on your tire repair shop.

- Lightweight and portable
- One man operation, simple to use
- Ratchets provide maximum tension with minimum force
- Abrasion resistant webbing straps
- Lightweight, durable and easy to use mandrel
- Independent inside & outside digital temperature readouts (PID)
- Air regulator

TRUCK & OTR



PANELS



Control



VVC PB



VVC PM



VVC PL

DIGITAL CONTROL PANELS

	VVC PB	VVC PM	VVC PL
220V	✓	✓	✓
Single Phase	✓	✓	✓
40 Amps	✓	✓	✓
Dual Digital Controls	✓	✓	✓
Triple Digital Controls			✓
Inside & Outside Air Bag Pressure Control		✓	✓
Core Temperature reading		✓	✓
Accurate Timer Control		✓	✓
Air Hoses included		✓	✓

OPTIONAL CONTROL PANEL STAND



THIN flex

THIN-FLEX was developed to easily conform to ANY tire contour.

Thinner and more flexible than ever before, THIN-FLEX is 35% thinner and 52% lighter than regular heat pads.

The heat pad cover is made of resistant nylon fabric, protecting the heat pad and providing a longer service life.

NEW THIN PADS

VVT1616H	HEAT PAD THIN - heat surface 14" x 14", Overall 16" x 16", 220V WITH T.C.
VVT2010H	HEAT PAD THIN - heat surface 18" x 8", Overall 20" x 10", 220V WITH T.C.
VVT2010IH	HEAT PAD THIN - heat surface 18" x 8", Overall 20" x 10" inside, 220V WITH T.C.
VVT2424H	HEAT PAD THIN - heat surface 22" x 22", Overall 24" x 24", 220V WITH T.C.
VVT2621H	HEAT PAD THIN - heat surface 24" x 19", Overall 26" x 21", 220V WITH T.C.
VVT2828H	HEAT PAD THIN - heat surface 26" x 26", Overall 28" x 28", 220V WITH T.C.
VVT3217H	HEAT PAD THIN - heat surface 30" x 15", Overall 32" x 17", 220V WITH T.C.
VVT3636H	HEAT PAD THIN - heat surface 34" x 34", Overall 36" x 36", 220V WITH T.C.
VVT4220H	HEAT PAD THIN - heat surface 40" x 18", Overall 42" x 20", 220V WITH T.C.
VVT6020H	HEAT PAD THIN - heat surface 58" x 18", Overall 60" x 20", 220V WITH T.C.
VVT7824H	HEAT PAD THIN - heat surface 76" x 22", Overall 78" x 24", 220V WITH T.C.

NEW THIN PADS COVERS

VVT1616HCV	COVER FOR THIN HEAT PAD 16"X16"
VVT2010HCV	COVER FOR THIN HEAT PAD 20"X10"
VVT2424HCV	COVER FOR THIN HEAT PAD 24"X24"
VVT2621HCV	COVER FOR THIN HEAT PAD 26"X21"
VVT2828HCV	COVER FOR THIN HEAT PAD 28"X28"
VVT3217HCV	COVER FOR THIN HEAT PAD 32"X17"
VVT3636HCV	COVER FOR THIN HEAT PAD 36"X36"
VVT4220HCV	COVER FOR THIN HEAT PAD 42"X20"
VVT6020HCV	COVER FOR THIN HEAT PAD 60"X20"
VVT7824HCV	COVER FOR THIN HEAT PAD 78"X24"

35% THINNER

heat PADS

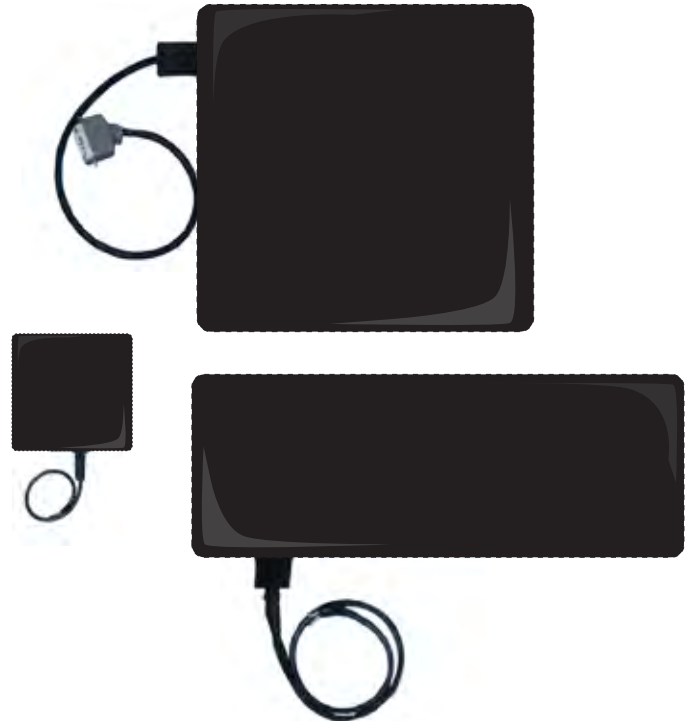
Vulcaflex®

Vulcaflex® SYSTEM HEAT PAD

VV116H (110V)	HEAT PAD - HEAT SURFACE 10" x 5"	Overall 12" x 6" , 220V WITH T.C.
VV128H (110V)	HEAT PAD - HEAT SURFACE 10.5" x 7"	Overall 13" x 8" , 220V WITH T.C.
VV1010H	HEAT PAD - HEAT SURFACE 8" x 8"	Overall 10" x 10" , 220V WITH T.C.
VV1210H	HEAT PAD - HEAT SURFACE 10.5" x 9"	Overall 12" x 10" , 220V WITH T.C.
VV30NH	HEAT PAD - HEAT SURFACE 14.5" x 7.75"	Overall 17" x 9" , 220V WITH T.C.
VV126H	HEAT PAD - HEAT SURFACE 11.5" x 5"	Overall 13" x 6" , 220V WITH T.C.
VV288H	HEAT PAD - HEAT SURFACE 27" x 7"	Overall 28.5" x 8" , 220V WITH T.C.
VV1213H	HEAT PAD - HEAT SURFACE 13" x 12"	Overall 18" x 13" , 220V WITH T.C.
VV1414H	HEAT PAD - HEAT SURFACE 14" x 14"	Overall 16" x 16" , 220V WITH T.C.
VV2010IH	HEAT PAD - HEAT SURFACE 18" x 8"	Overall 20" x 10" Inside, 220V W/T.C.
VV2010H	HEAT PAD - HEAT SURFACE 18" x 8"	Overall 20" x 10" , 220V WITH T.C.
VV2210H	HEAT PAD - HEAT SURFACE 18.5" x 9"	Overall 22" x 10" , 220V WITH T.C.
VV2213H	HEAT PAD - HEAT SURFACE 18.5" x 12"	Overall 22" x 13" , 220V WITH T.C.
VV2217H	HEAT PAD - HEAT SURFACE 19" x 15.5"	Overall 22" x 17" , 220V WITH T.C.
VV2621H	HEAT PAD - HEAT SURFACE 22.5" x 20"	Overall 26" x 21" , 220V WITH T.C.
VV1614H	HEAT PAD - HEAT SURFACE 12" x 14"	Overall 16" x 14" , 220V WITH T.C.
VV1616H	HEAT PAD - HEAT SURFACE 16" x 16"	Overall 22" x 17" , 220V WITH T.C.
VV2215H	HEAT PAD - HEAT SURFACE 19.5" x 14"	Overall 22" x 15" , 220V WITH T.C.
VV2424H	HEAT PAD - HEAT SURFACE 22" x 22"	Overall 24" x 24" , 220V WITH T.C.
VV2519H	HEAT PAD - HEAT SURFACE 25" x 19"	Overall 31" x 20" , 220V WITH T.C.
VV2626H	HEAT PAD - HEAT SURFACE 26" x 26"	Overall 32" x 27" , 220V WITH T.C.
VV2815H	HEAT PAD - HEAT SURFACE 25" x 14"	Overall 28" x 15" , 220V WITH T.C.
VV3015H	HEAT PAD - HEAT SURFACE 30" x 15"	Overall 36" x 16" , 220V WITH T.C.
VV3132H	HEAT PAD - HEAT SURFACE 31" x 32"	Overall 37" x 33" , 220V WITH T.C.
VV3434H	HEAT PAD - HEAT SURFACE 31" x 31"	Overall 34" x 34" , 220V WITH T.C.
VV3620H	HEAT PAD - HEAT SURFACE 31" x 31"	Overall 36" x 20" , 220V WITH T.C.
VV3624H	HEAT PAD - HEAT SURFACE 36" x 24"	Overall 42" x 27" , 220V WITH T.C.
VV3636H	HEAT PAD - HEAT SURFACE 36" x 36"	Overall 47" x 39" , 220V WITH T.C.
VV4215H	HEAT PAD - HEAT SURFACE 42" x 15"	Overall 48" x 16" , 220V WITH T.C.
VV4220H	HEAT PAD - HEAT SURFACE 42" x 20"	Overall 48" x 21" , 220V WITH T.C.
VV4224H	HEAT PAD - HEAT SURFACE 42" x 24"	Overall 47" x 25" , 220V WITH T.C.
VV4444H	HEAT PAD - HEAT SURFACE 40" x 40"	Overall 44" x 44" , 220V WITH T.C.
VV4824H	HEAT PAD - HEAT SURFACE 48" x 24"	Overall 54" x 25" , 220V WITH T.C.
VV5220H	HEAT PAD - HEAT SURFACE 52" x 18"	Overall 58" x 20" , 220V WITH T.C.
VV5224H	HEAT PAD - HEAT SURFACE 52" x 24"	Overall 58" x 25" , 220V WITH T.C.
VV6024H	HEAT PAD - HEAT SURFACE 60" x 24"	Overall 66" x 26" , 220V WITH T.C.
VV6624H	HEAT PAD - HEAT SURFACE 66" x 24"	Overall 72" x 26" , 220V WITH T.C.
VV7620H	HEAT PAD - HEAT SURFACE 76" x 20"	Overall 85" x 22" , 220V WITH T.C.
VV7624H	HEAT PAD - HEAT SURFACE 76" x 24"	Overall 85" x 26" , 220V WITH T.C.
VV8424H	HEAT PAD - HEAT SURFACE 84" x 24"	Overall 90" x 26" , 220V WITH T.C.

L SHAPE HEAT PAD

VVRTVLS	HEAT PAD L SHAPE - HEAT SURFACE 9" sidewall x 8" tread x 9" width	Overall 12" sidewall x 9" tread x 12" width, 220V WITH T.C.
VV180LS	HEAT PAD L SHAPE - HEAT SURFACE 12" sidewall x 8" tread x 16" width	Overall 14" sidewall x 10" tread x 21" width, 220V WITH T.C.
VV250LS	HEAT PAD L SHAPE - HEAT SURFACE 15" sidewall x 18" tread x 16" width	Overall 18" sidewall x 21" tread x 21" width, 220V WITH T.C.
VV021LS	HEAT PAD L SHAPE - HEAT SURFACE 22" sidewall x 22" tread x 24" width	Overall 26" sidewall x 26" tread x 28" width, 220V WITH T.C.



Vulcaflex® air BAGS

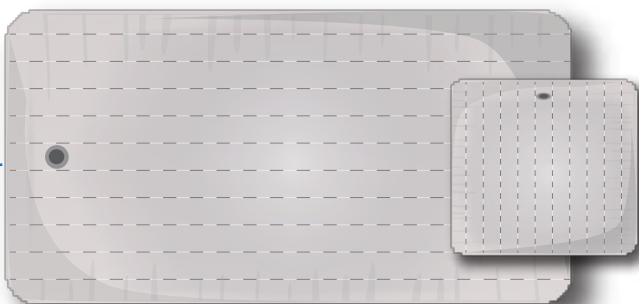


CILINDER AIR BAGS

VV88/12CAB	CYLINDER AIR BAG 8" X 12"
VV911/13CAB	CYLINDER AIR BAG 9" X 13"
VV1010/17CAB	CYLINDER AIR BAG 10" X 10"
VV1220CAB	CYLINDER AIR BAG 12" X 20"
VV1315/20CAB	CYLINDER AIR BAG 13" X 20"
VV1518/24CAB	CYLINDER AIR BAG 15" X 24"
VV1721/24CAB	CYLINDER AIR BAG 17" X 24"
VV1721/32CAB	CYLINDER AIR BAG 17" X 32"
VV2124CAB	CYLINDER AIR BAG 21" X 24"
VV2427/32CAB	CYLINDER AIR BAG 24" X 32"
VV2732/32CAB	CYLINDER AIR BAG 27" X 32"
VV3336/32CAB	CYLINDER AIR BAG 33" X 32"
VV3842/32CAB	CYLINDER AIR BAG 38" X 32"
VV4447/32CAB	CYLINDER AIR BAG 44" X 32"

OUTSIDE HARNESS AIR BAGS

VV2213HGB	OUTSIDE FLAT AIR BAG 22" X 13" WITH STRAP GUIDE
VV2621HGB	OUTSIDE FLAT AIR BAG 26" X 21" WITH STRAP GUIDE
VV3620HGB	OUTSIDE FLAT AIR BAG 36" X 20" WITH STRAP GUIDE
VV3624HGB	OUTSIDE FLAT AIR BAG 36" X 24" WITH STRAP GUIDE
VV4747HGB	OUTSIDE FLAT AIR BAG 47" X 47" WITH STRAP GUIDE
VV4820HGB	OUTSIDE FLAT AIR BAG 48" X 20" WITH STRAP GUIDE
VV4824HGB	OUTSIDE FLAT AIR BAG 48" X 24" WITH STRAP GUIDE
VV4832HGB	OUTSIDE FLAT AIR BAG 48" X 32" WITH STRAP GUIDE
VV6724HGB	OUTSIDE FLAT AIR BAG 67" X 24" WITH STRAP GUIDE
VV7526HGB	OUTSIDE FLAT AIR BAG 75" X 26" WITH STRAP GUIDE



FLAT AIR BAGS

VV1210FAB	FLAT AIR BAG 12" x 10"
VV2210FAB	FLAT AIR BAG 22" x 10"
VV2213FAB	FLAT AIR BAG 22" x 13"
VV2517FAB	FLAT AIR BAG 25" x 17"
VV2621FAB	FLAT AIR BAG 26" x 21"
VV2820FAB	FLAT AIR BAG 28" x 20"
VV3030FAB	FLAT AIR BAG 30" X 30"
VV3620FAB	FLAT AIR BAG 36" x 20"
VV3624FAB	FLAT AIR BAG 36" x 24"
VV3636FAB	FLAT AIR BAG 36" x 36"
VV4820FAB	FLAT AIR BAG 48" x 20"
VV4824FAB	FLAT AIR BAG 48" x 24"
VV4832FAB	FLAT AIR BAG 48" x 32"
VV5432FAB	FLAT AIR BAG 54" x 32"
VV6732FAB	FLAT AIR BAG 67" x 32"
VV7532FAB	FLAT AIR BAG 75" x 32"
VV8132FAB	FLAT AIR BAG 81" x 32"
VV9026FAB	FLAT AIR BAG 90" x 26"
VV9032FAB	FLAT AIR BAG 90" x 32"
VV9047FAB	FLAT AIR BAG 90" x 47"

ACCESSORIES

SAND BAGS



VVSB LUG	LUG SANDBAG KIT 4 SANDBAG OF EACH SIZE
VVSBTRUCK	INSIDE FILLER 42TRUCK SANDBAG KIT 6 X (6"X15") & 2 X (3.5"X15")
VVSB1535I	SANDBAG 3.5" X 15" for inside
VVSB156I	SANDBAG 6" X 15" for inside
VVSB18	SANDBAG 11/2" X 8"
VVSB48	SANDBAG 4" X 8"
VVSB310	SANDBAG 3" X 10"
VVSB35	SANDBAG 3" X 5"
VVSB314	SANDBAG 3" X 14"
VVSB26	SANDBAG 2" X 6"
VVAH24	Hose for AIR BAG 24"

BEAD BLOCKS



BIK25	BEAD BLOCK FOR 25" OTR
BIK29	BEAD BLOCK FOR 29" OTR
BIK33	BEAD BLOCK FOR 33" OTR
BIK35	BEAD BLOCK FOR 35" OTR
BIK39	BEAD BLOCK FOR 39" OTR
BIK45	BEAD BLOCK FOR 45" OTR
BIK49	BEAD BLOCK FOR 49" OTR
BIK51	BEAD BLOCK FOR 51" OTR
BIK57	BEAD BLOCK FOR 57" OTR
BIK63	BEAD BLOCK FOR 63" OTR

PIPE KITS



VVPK212026	PIPE KIT 2" X 26" X 120 PIPE FOR VULCAFLEX SYSTEM WITH FOLDABLE BOX
VVPK24026	PIPE KIT 2" X 26" X 40 PIPE FOR VULCAFLEX SYSTEM WITH FOLDABLE BOX
VVPK28026	PIPE KIT 2" X 26" X 80 PIPE FOR VULCAFLEX SYSTEM WITH FOLDABLE BOX
VVPK310030	PIPE KIT 3" X 30" X 100 PIPE FOR VULCAFLEX SYSTEM WITH FOLDABLE BOX
VVPK312030	PIPE KIT 3" X 30" X 120 PIPE FOR VULCAFLEX SYSTEM WITH FOLDABLE BOX
VVPK310034	PIPE KIT 3" X 34" X 100 PIPE FOR VULCAFLEX SYSTEM WITH FOLDABLE BOX
VVPK312034	PIPE KIT 3" X 34" X 120 PIPE FOR VULCAFLEX SYSTEM WITH FOLDABLE BOX
VVP226	PIPE 2" X 26" (unite)
VVP330	PIPE 3" X 30" (unite)
VVP334	PIPE 3" X 34" (unite)
VVFB323025	FOLDABLE BOX 32" X 30" X 25" (unite)
VVFB484034	FOLDABLE BOX 48" X 40" X 34" (unite)

tire STAND

Vulcan Vulcap Tire Stand with Motorized Rollers

S2286 max. capacity 3 500 lbs / dimensions: 117" h x 83" w x 57.5" d

S3127 max. capacity 5 500 lbs lbs / dimensions: 117" h x 83" w x 57.5" d

S4000 max. capacity 15 000 lbs lbs / dimensions: 132" h x 124" w x 119" d

- Durable steel structure
- Engineer certified
- Sturdy with angled base
- Hand or foot rotation control
- Removable base for compact shipping and storing
- Available in : 110V/ 220V/ 60hertz
- 220V /3HP Motor also available in 50/60 hz
- Optional : automatic hydraulic height adjustment system



Equipment CHART

TRACTOR & OTR WIDE BASE TIRE SIZES	OTR TIRE SIZE	CYLINDER BAG	INSIDE FLAT AIR BAG		INSIDE HEAT PAD		OUTSIDE HEAT PAD	OUTSIDE AIR BAG	STRAP	
			BIAS PLY	RADIAL	BIAS PLY	RADIAL				
14.9-24 through 16.9-38	14.00-20 13.00-24/25 14.00-24/25	16.00-24/25 15.5-25 17.5-25	CAB1315/20 or Pipe kit VVPK28026	VV3624FAB	VV3624FAB	VV2424H	VV3015H	VV2621H	VV3624HGB	6 X VVS215
18.4-24 through 20.8-42 23.1-26 through 30.5-32 25/65-25	18.00-24/25 18.00-33 18.00-49 20.5-25 23.5-25 24.00-25 24.00-29 24.00-35 27.00-33 27.00-49 29.5-25	21.00-25 21.00-35 21.00-49 20.5-25 24.00-49 26.5-25 26.5-29 29.5-29 27-56.5	CAB1721/24 or Pipe kit VVPK212026	VV3624FAB	VV3624FAB	VV2424H	VV3015H	VV2621H	VV3624HGB	6 X VVS215
30/65-25 30/65-29 35/65-33	33.00-51 33.25-29 33.25-35	33.5-33 33.5-39 33-59.5	CAB2732/32 or Pipe kit VVPK212026	VV4824FAB	VV3030FAB	VV2626H	VV4220H	VV4220H & VV250LS	VV4824HGB	6 X VVS215
40/65-39 45/65-45	36.00-51 40.00-57 37.25-35 37.5-33	37.5-39 37.5-51 36-59.5 39-59.5	CAB2732/32 or Pipe kit VVPK310034	VV3636FAB	VV6724FAB	VV3636H	VV4220H & VV6020H	VV4220H & VV2250LS	VV4824HGB or VV7526HGB	6 X VVS215
49.5/85-57 50/65-51	40.00-57		CAB3842/32 or Pipe kit VVPK310034	VV3636FAB	VV6724FAB	VV3636H	VV4220H & VV6020H	VV4220H & VV2250LS	VV7526HGB	6 X VVS224
50/80-57 55/80-57 53.5/85-57 -63 55.5/80-57 -63 55.5/85-57			CAB4447/32 or Pipe kit VVPK312034	VV3636FAB	VV7526FAB or VV9026FAB	VV3636H	VV6624H or VV8424H	VV6624H or VV8424H	VV6624H or VV8424H	6 X VVS224

WARRANTY on VULCANIZER

Vulcan-Vulcap Industries Inc. warrants to the purchaser all new equipment and parts of vulcanizing machines from F.O.B. Terrebonne, QC plant for a period of six months from the date of purchase from an authorized VULCAN-VULCAP Dealer and/or Distributor. Any part which fails because of defect in material or workmanship, under normal use and services, except those which are within the category of normal maintenance, will be replaced on a pro rata basis, provided that the defective part is returned by the purchaser to the Dealer and/or Distributor from which it was purchased and VULCAN-VULCAP'S warranty procedures is strictly followed. The warranty does not cover parts, which have failed through misuse or mishandling, which have been tampered with, altered or repaired by any unauthorized party to an extent that, in VULCAN-VULCAP'S opinion the reliability or performance of the equipment has been impaired. If replacement parts other than those recommended by VULCAN-VULCAP are used, the warranty for all parts is automatically terminated.

This warranty does not cover parts, which have been purchased as used equipment.

After obtaining a Return of Goods Authorization from us, please send the defective part(s) pre-paid to VULCAN-VULCAP Industries Inc, 1088 rue des Forges, Terrebonne, Quebec, Canada. J6Y 0P6

WARRANTY on HEAT PADS, AIR BAGS and INFLATABLE MANDRELS

400 hours of cure or 6 months from the date of purchase by the end-user whichever occurs first.

Any claim under this warranty must be made within the warranty period. This warranty is expressly in lieu of all other warranties, expressed or implied, and of all other obligations or liabilities on the part of VULCAN-VULCAP.

This warranty applies to new machines only.

VULCAN-VULCAP INDUSTRIES INC. shall not be liable to a purchaser or any other person for resultant damages or consequential loss of any kind arising directly or indirectly from the use of its products. In no event shall VULCAN-VULCAP be liable for special or consequential damages resulting or directly from any defect. Unless otherwise expressly provided in writing, no other guarantee or warrantee may be implied.

The above warranty provisions will apply to VULCAFLEX Heat Pads and Air Bags, including when they are being used with other systems and controls. This does not relieve the customer from following proper operating procedures and does not cover misuse or damage to Heat Pads and Air Bags.



VULCAN
VULCAP
www.vulcanvulcap.com



